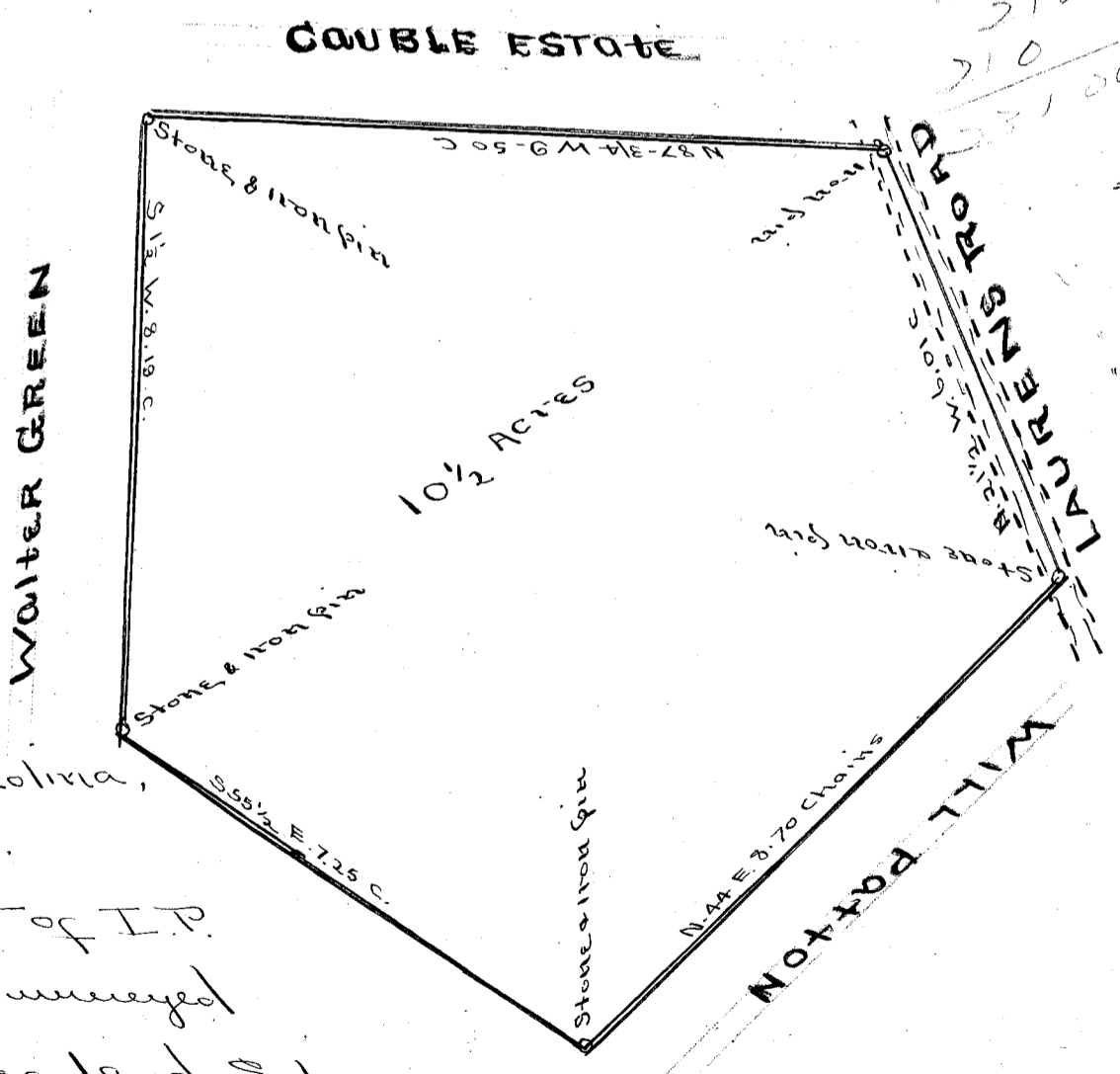
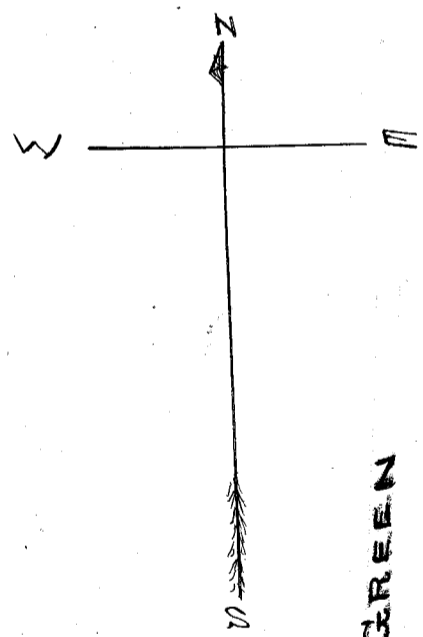


Corrected by  
Black & Bates  
6-8-1911.

Scale 5 Ch. Per Inch

251  
250  
217  
818



3.50  
5.00  
210  
231.00

State of South Carolina,  
Greenville County.  
At the request of I.P.  
Kellett I have surveyed  
the above tract of land sit-  
uated in the State and  
County aforesaid about 3 1/2 miles  
from the City of Greenville on the  
west side of the Sawyers Road containing  
ten and one half acres, and hath such shape,  
marks and bounds as shown above, surveyed Oct-12-1911 W.A. Adams

Copied by B&B.  
Recorded Oct 16-11

Sw